

Quick Installation Guide

1. Get Start Installation

Connect the 3G Wireless Router to Your Network

Note: ***DO NOT** connect 3G Mobile Router to power before performing the installation steps below.*

Step1.

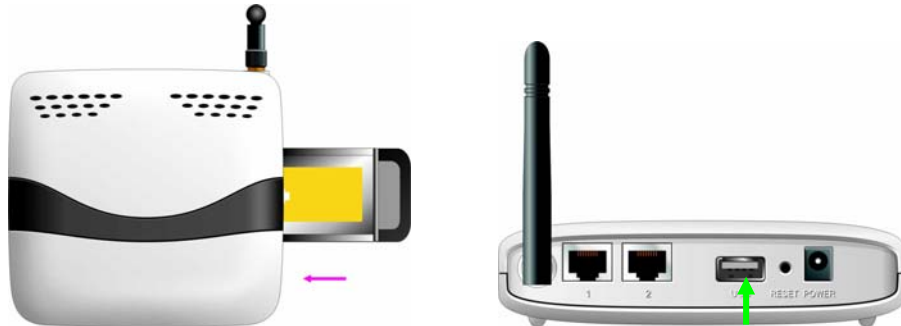
Attach the antenna.



- 1.1. Remove the antenna from its plastic wrapper.
- 1.2. Screw the antenna in a clockwise direction to the back panel of the unit.
- 1.3. Once secured, position the antenna upward at its connecting joint. This will ensure optimal reception.

Step2.

Insert your either [Type II 3G card](#) (either 16-bit or 32-bit) or plug [USB 3G Modem](#) to router



Note: The **3G** Mobile Router is designed to work with either UMTS or EV-DO and even HSUPA 3G modem. Please refer to your service provider for detailed feature information.

Step3.

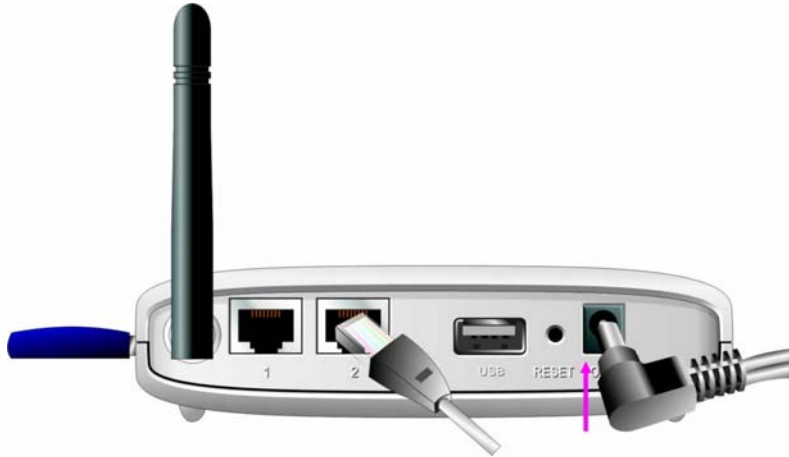
Insert the Ethernet patch cable into LAN Port on the back panel of the **3G** Mobile Router, and an available Ethernet port on the network adapter in the computer you will use to configure the unit.



Note: The **3G** Mobile Router LAN Port is “Auto-MDI/MDIX.” This provides patch Ethernet cable LAN Port access.

Step 4.

- 4.1. Connect the power adapter to the receptor on the back panel of your **3G** Mobile Router.
- 4.2. Then plug the other end of the power adapter into a wall outlet or power strip.

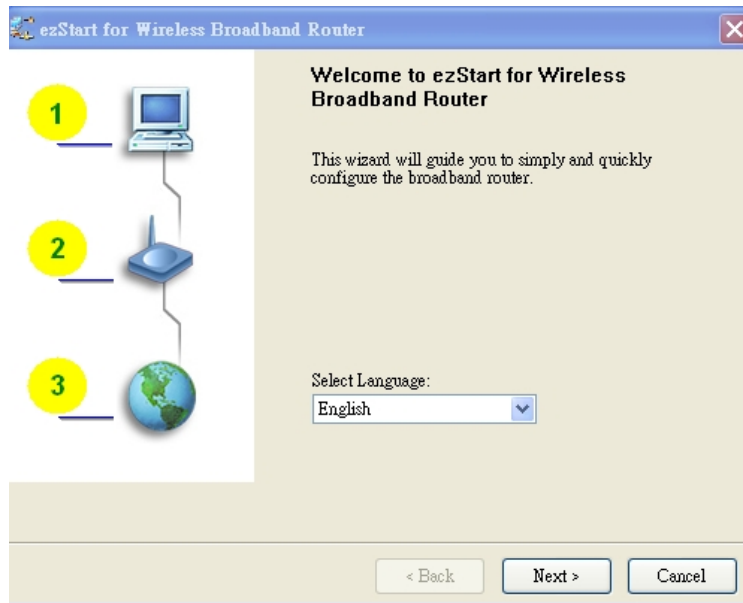


- a. The Power LED will turn ON to indicate power has been applied.
- b. Other LEDs will flash ON and OFF as the **3G** Mobile Router performs initialization and Internet connection processes. This will take a few minutes.
- c. When complete, the following LEDs will illuminate green: 3G, WAN, LAN, and WiFi.



2. Using the Easy Setup Utility

1. Install the Easy Setup Utility from CD. After the installation is finished, you can execute it by the shortcut.
2. Configure the settings by the following steps.
 - 2.1 Select Language then click "Next" for continues.

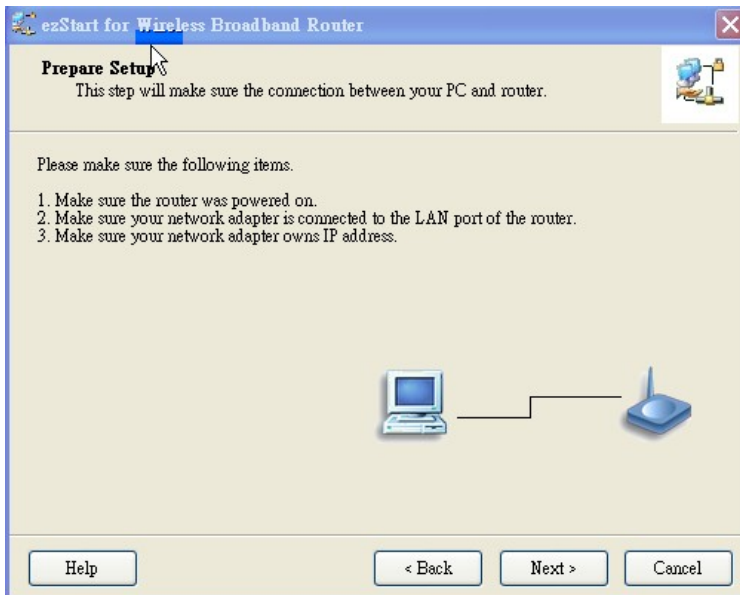


- 2.2. Setup mode. You can select Quick mode to run the setup step-by-step or run advanced mode to diagnose the network settings of the router.

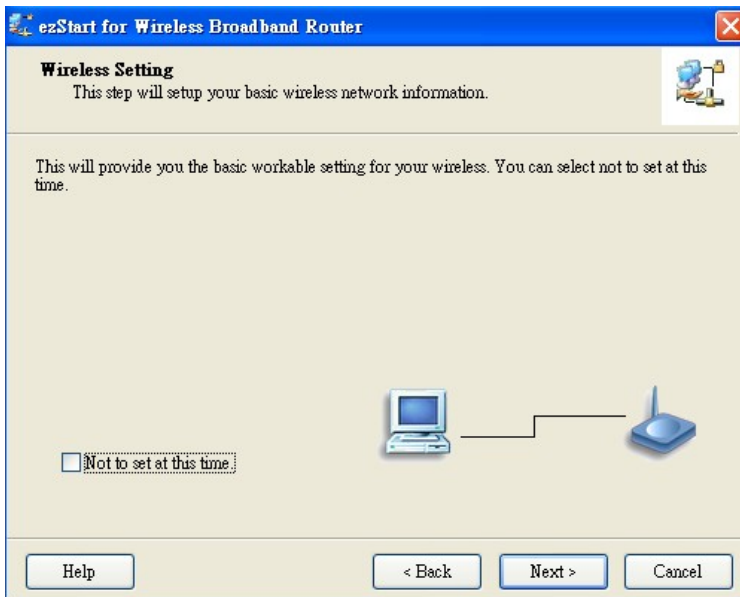


Click " Next" for continue.

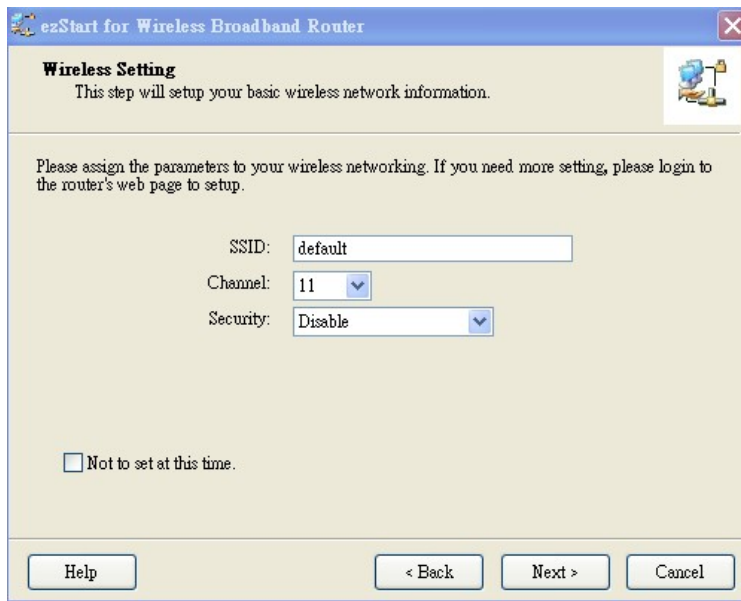
2.3 Prepare Setup. Check the items and click “ Next” for continue.



2.4 Wireless Setting. Click “ Next” for continue.

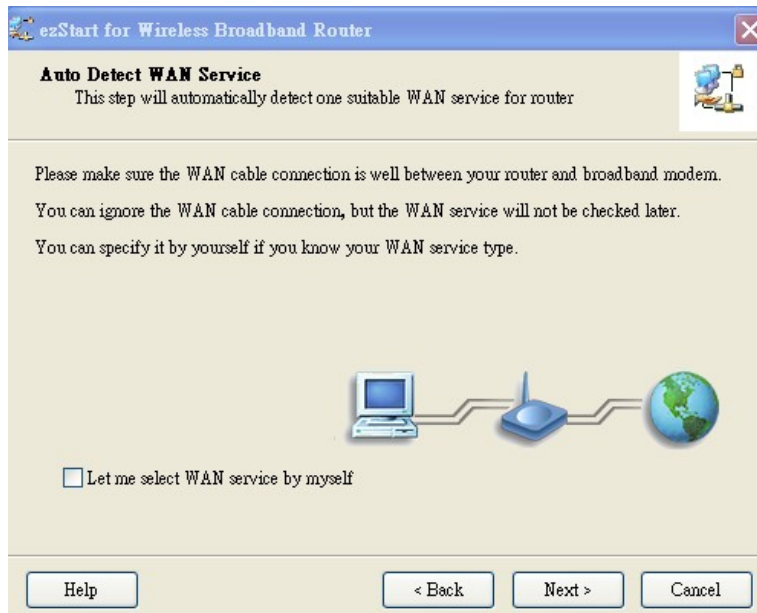


2.5 Wireless Setting. Click “ Next” for continue.



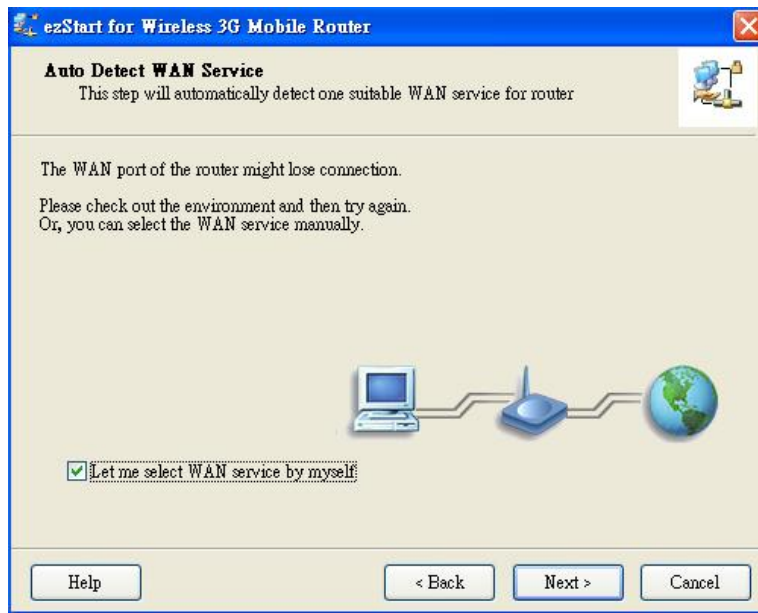
The screenshot shows a window titled "ezStart for Wireless Broadband Router" with a close button in the top right corner. The main heading is "Wireless Setting" with a sub-heading "This step will setup your basic wireless network information." and a small icon of a wireless network. Below this, there is a paragraph: "Please assign the parameters to your wireless networking. If you need more setting, please login to the router's web page to setup." The settings are as follows: SSID is a text box containing "default"; Channel is a dropdown menu showing "11"; Security is a dropdown menu showing "Disable". At the bottom left, there is a checkbox labeled "Not to set at this time." which is currently unchecked. At the bottom of the window, there are four buttons: "Help", "< Back", "Next >", and "Cancel".

2.6 Auto Detect WAN Service. Click “ Next” for continue.

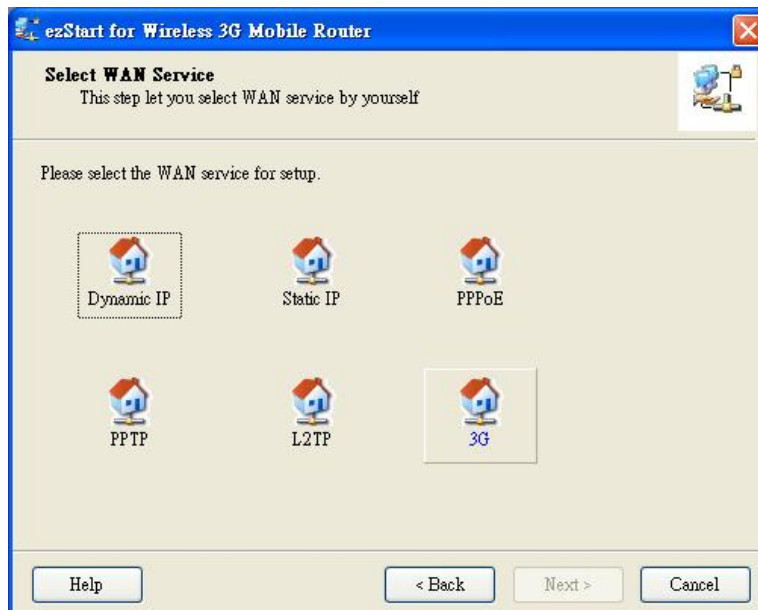


The screenshot shows a window titled "ezStart for Wireless Broadband Router" with a close button in the top right corner. The main heading is "Auto Detect WAN Service" with a sub-heading "This step will automatically detect one suitable WAN service for router" and a small icon of a wireless network. Below this, there is a paragraph: "Please make sure the WAN cable connection is well between your router and broadband modem. You can ignore the WAN cable connection, but the WAN service will not be checked later. You can specify it by yourself if you know your WAN service type." In the center, there is a diagram showing a laptop connected to a wireless router, which is then connected to a globe representing the internet. At the bottom left, there is a checkbox labeled "Let me select WAN service by myself" which is currently unchecked. At the bottom of the window, there are four buttons: "Help", "< Back", "Next >", and "Cancel".

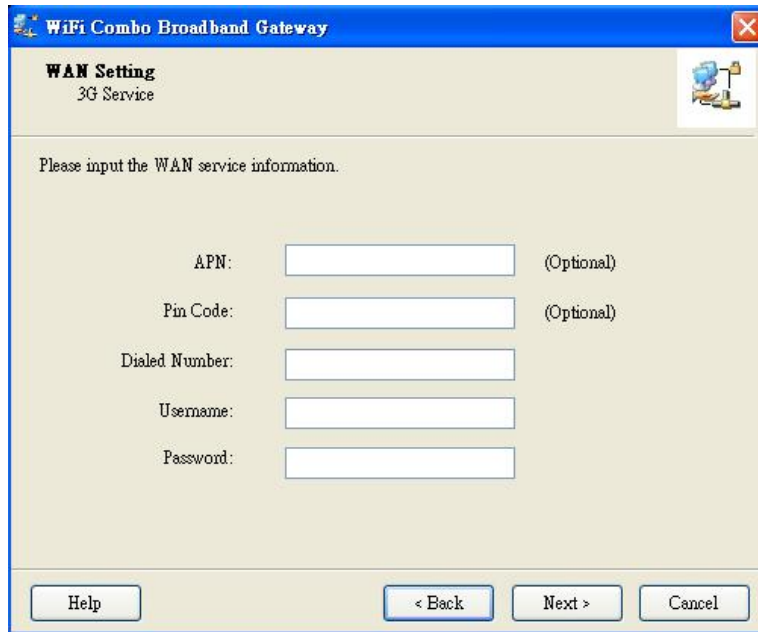
2.7 3G Setup



1. Select the check box of "Let me select WAN Service by myself."



2. Select "3G"



WiFi Combo Broadband Gateway

WAN Setting
3G Service

Please input the WAN service information.

APN: (Optional)

Pin Code: (Optional)

Dialed Number:

Username:

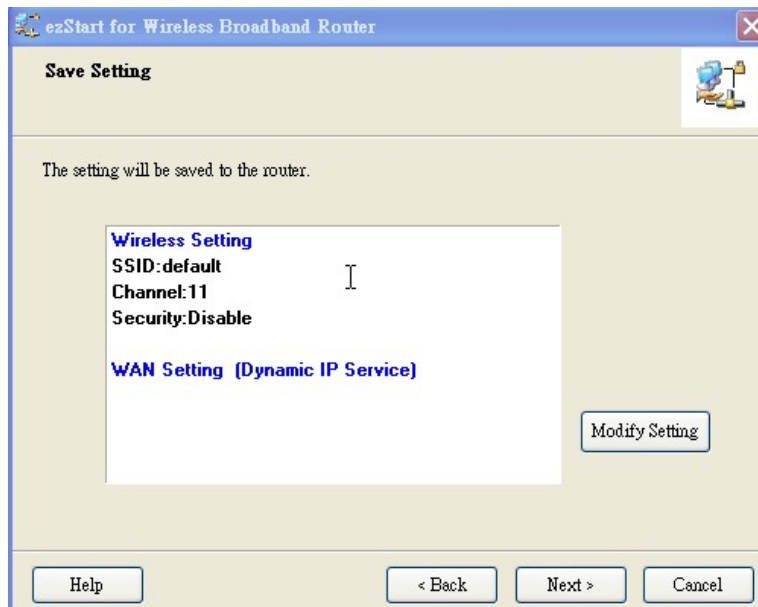
Password:

Help < Back Next > Cancel

3. Please fill in APN ex: internet & Dialed Number. For example, #777 or *99#, according to the ISP system required.

* if you have further question regarding 3G setup, please contact your ISP provider.)

2.8 Summary of the settings. Click “ Next” for continue.



ezStart for Wireless Broadband Router

Save Setting

The setting will be saved to the router.

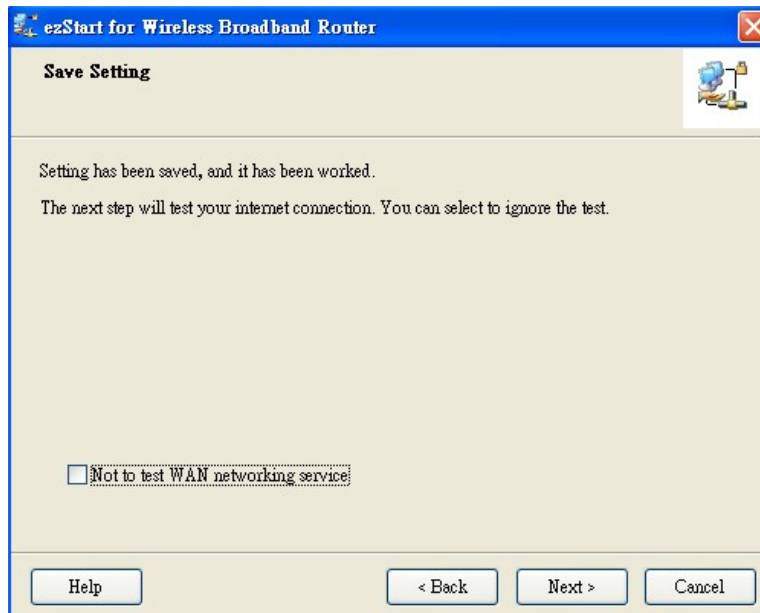
Wireless Setting
SSID: default
Channel: 11
Security: Disable

WAN Setting (Dynamic IP Service)

Modify Setting

Help < Back Next > Cancel

2.9 Test WAN Networking service. Click “ Next” for continue.



2.10 Setup Completed. You can open the default web browser to configure advanced settings of the router.



Click “ Finish” to complete the installation.